

INSTRUCTION SHEET Page 2
TILLOTSON[™] CARBURETOR - MODEL HD
GENERAL EXPLODED VIEW
THE GENERAL DESIGN AND PARTS SHOWN WILL VARY TO
INDIVIDUAL UNITS COVERED ON THIS INSTRUCTION SHEET

CLEANING

CLEANING MUST BE DONE WITH CARBURETOR DISASSEMBLED.
SOAK PARTS LONG ENOUGH TO SOFTEN AND REMOVE ALL FOREIGN MATERIAL. USE

- (1) A CARBURETOR CLEANING SOLVENT,
- (2) LACQUER THINNER, OR
- (3) DENATURED ALCOHOL.

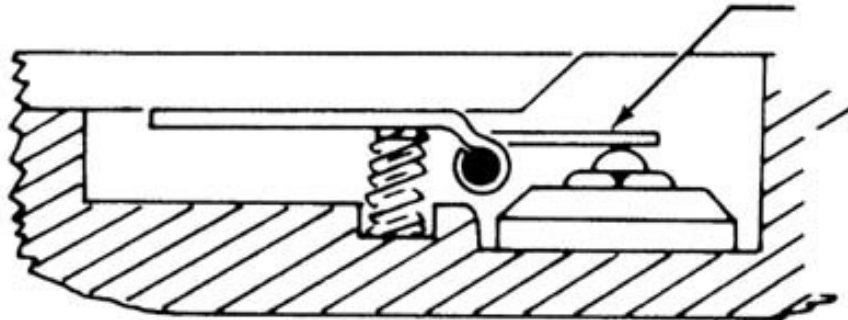
MAKE CERTAIN THE THROTTLE BORE IS FREE OF ALL CARBON AND VARNISH DEPOSITS.
RINSE OFF IN SUITABLE SOLVENT. BLOW OUT ALL PASSAGES IN CASTINGS WITH COMPRESSED AIR AND CHECK
CAREFULLY TO INSURE THOROUGH CLEANING OF OBSCURE AREAS.
CAUTION: DO NOT SOAK GASKETS OR RUBBER PARTS IN CLEANING SOLVENTS.

REASSEMBLY

REASSEMBLE IN REVERSE ORDER OR DISSASSEMBLY.
NOTE SPECIAL INSTRUCTIONS AND ADJUSTMENTS.

SPECIAL INSTRUCTIONS

WELCH PLUG INSTALLATION - INSTALL PLUG WITH CONVEX SIDE UP.
THEN FLATTEN, USING A 5/16" FLAT END PUNCH AND HAMMER.
(CORRECTLY INSTALLED WELCH PLUG IS FLAT.)
INLET NEEDLE SEAT INSTALLATION - INSTALL GASKET AND SEAT THEN
TIGHTEN TO 40-50 INCH LBS. OF TORQUE.
TO ADJUST BEND TANG
* CAUTION: DO NOT EXERT PRESSURE ON RESILIENT NEEDLE VALVE.
INLET CONTROL LEVER SETTING



INLET CONTROL LEVER SHOULD BE FLUSH WITH THE METERING CHAMBER WALL.

IDLE NEEDLE INSTALLATION - TURN NEEDLE (4) IN LIGHTLY UNTIL SEATED, THEN BACK OUT 1 TURN.
HIGH SPEED NEEDLE INSTALLATION - TURN NEEDLE (8) IN LIGHTLY UNTIL SEATED, THEN
BACK OUT 1 TURN.

IDLE ADJUSTMENT - ENGINE AT OPERATING TEMPERATURE, ADJUST IDLE
MIXTURE SCREW TO OBTAIN A SMOOTH STEADY IDLE AND ADJUST IDLE
SPEED SCREW TO ENGINE MANUFACTURER'S R.P.M.

HIGH SPEED ADJUSTMENT - ENGINE AT FULLY OPEN THROTTLE AND UNDER
NORMAL FULL LOAD, ADJUST NEEDLE TO OBTAIN THE HIGHEST R.P.M.